

THE PARISH OF BARDSEY WITH EAST KESWICK

# Village News



Oct – Nov 2024

---

A round up of church news and activities  
from the villages of Bardsey, East Keswick  
and the surrounding area

Fall, leaves, fall; die, flowers, away;  
Lengthen night and shorten day;  
Every leaf speaks bliss to me  
Fluttering from the autumn tree...

**Emily Brontë**

# Contents

From the Vicarage	3
Inclusive Church	3
Parish Church Services	4
From the Register	5
Bardsey Badminton Club	6
Macmillan Cancer Coffee Morning	6
Bardsey Parish Council Report	7
East Keswick Village Hall Illingworth Field Update	8
East Keswick Climate Change Garden	9
Bardsey and East Keswick Running Club	10
Bardsey Bowling Club Coffee Morning	10
Callister Hall Revamp	11
Bardsey and East Keswick Arts Festival	11
East Keswick Methodist Church Services and Events	12
East Keswick Methodist Church Christmas Craft Afternoon	13
East Keswick Flower Club Update and Events	14
Bardsey Tennis Club Grant	15
Autumn is Here	15
Harewood Police and Communities Together Meeting	16
Charity Jigsaw Bonanza	16
East Keswick Wildlife Trust	17
East Keswick Local History Group Talks	18
East Keswick WI Update	18
East Keswick Village Hall Open Day	19
Eco Chat: Green Money	20
Bardsey Cum Rigton WI Update	21
Cinema Night New Season	22
Churches Together Quiz Night	22
East Keswick Village Hall Prize Draw	23
Village Facilities, Clubs and Community Groups	24
Services Directory	26
Diary Dates	36

# From the Vicarage



Thank you so much to everyone who supported my last Sunday service, on 25 August.

My thanks to Jacquie for coordinating the wonderful lunch, Steve for coordinating the drinks and all those who contributed to make it such a special occasion.

Gerrard and I were very touched by all the good wishes we received. Your gifts were very generous, and we will look forward to using them now we've moved to Moseley.

We will miss you all.

**Angela**

## Inclusive Church



During Angela's time with us, the parish became a part of the **Inclusive Church Network**, which recognises and publicises our commitment to celebrate and affirm every person, and not discriminate against anyone.

Being inclusive churches means we actively welcome all people to worship with us, regardless of status, culture, ethnicity, physical or mental ability, gender identity or sexuality.

We encourage everyone to join with us in our services to develop a faith which is not defined by worldly standards but by the freedom freely given to all people by the hand of God.

[www.inclusive-church.org](http://www.inclusive-church.org)

# Parish Church Services

DATE	LOCATION	SERVICES
WED 2 OCT	St Mary Magdalene	11.00am Holy Communion
SUN 6 OCT	All Hallows	10.45am Joint Holy Communion, Harvest Sunday
SUN 13 OCT	All Hallows	8.00am Holy Communion 10.45am Family Service
	St Mary Magdalene	9.15am Family Service
SUN 20 OCT	All Hallows	8.00am Morning Worship 10.45am Holy Communion
	St Mary Magdalene	9.15am Holy Communion
SUN 27 OCT	All Hallows	8.00am Holy Communion 10.45am Morning Worship 3.00pm Memorial Service
	St Mary Magdalene	9.15am Morning Worship
SUN 3 NOV	All Hallows	11.00am Joint Holy Communion, Patronal Festival
WED 6 NOV	St Mary Magdalene	11.00am Holy Communion
SUN 10 NOV	All Hallows	8.00am Holy Communion 10.45am Family Service
	St Mary Magdalene	9.15am Family Service
SUN 17 NOV	All Hallows	8.00am Morning Worship 10.45am Holy Communion
	St Mary Magdalene	9.15am Holy Communion
SUN 24 NOV	All Hallows	8.00am Holy Communion 10.45am Morning Worship
	St Mary Magdalene	9.15am Morning Worship



# From the **Register**

We welcome those who  
have been baptised

**HENRY CHRISTOPHER ROBERT RAYBOULD**

Sunday 11 August, St Mary Magdalene

**OLIVER PAUL GRIFFITHS**

Sunday 8 September, All Hallows

We congratulate those who  
have been married

**LUCY WHITAKER & JAMES BODDINGTON**

Saturday 7 September, All Hallows

We remember those whose  
funerals have taken place

**STEPHEN TAYLOR**

Friday 30 August, St Mary Magdalene

**NORMAN OVERFIELD**

Thursday 26 September, All Hallows

Memorial Service

**GERRY HOLBROOK**

Friday 20 September, All Hallows

# Macmillan Coffee Morning

Elizabeth Blake

On **Saturday 2 November**, I am hosting a coffee morning in aid of Macmillan nurses, from **10.00am - 12.00 midday**, at Bardsey Village Hall. Any donations of cakes, pastries, and savouries for the event would be welcome.

Please come along on this autumn day for coffee cake and a chat, to support this worthy cause!

We accept cash or contactless payments on the day. Donations can also be made

using the QR code on the posters around the villages, if you cannot attend.

Do contact me if you would like further information at [lizblake1@icloud.com](mailto:lizblake1@icloud.com)



## BARDSEY BADMINTON CLUB

Our new 2024-25 season starts on **Tuesday 1 October** at 7.30pm in Bardsey Village Hall. We play every Tuesday evening during the winter from October until the end of March.

New members are always welcome and should you wish to join the club or just try a taster session please come along to the Village Hall on any Tuesday evening or phone Hazel Smith, our Secretary, on **01937 572215** for more information.

We are currently a small, mixed ability, social group and would look forward to welcoming new players and having another enjoyable season.



# Bardsey-cum-Rigton Parish Council Report

Cllr. Linda Flockton



## **Biodiversity wildlife survey**

It has been agreed to obtain a wildlife survey, as a baseline in order to receive recommendations on management to enhance the biodiversity of Park Field, Willans Wood, the village green and duck pond. Within this survey area, habitats will be identified, mapped and their condition recorded. Information on features of potential nature conservation value will be recorded, particularly the presence/potential of legally protected or notable species and/or invasive plant species (where readily identifiable). The survey will be carried out in accordance with current published methodology. Cllr Jeanne Jackson had obtained three quotes and sent them out to all councillors and a company to carry out this survey in spring 2025 was agreed.

## **Park Field**

Advice was taken from a tree specialist, and some diseased trees in Park Field had to be felled. Other trees, overhanging nearby properties have been reduced in size and/or their canopies raised. Also, a dead tree that had fallen into the beck was removed.

## **Hedges adjoining public rights-of-way**

There are many public rights of way around Bardsey and Bob Buckenham of PROW advised that, legislation requires the homeowner of a garden or hedge that backs onto a public right-of-way is responsible for keeping them cut back and the pathway open. Please do not throw garden rubbish or weeds into the hedge bottom and please keep all paths clear on public rights-of-way.

## **Hedges overhanging pavements on roads and public highways**

We have had many complaints from villagers about hedges encroaching and overhanging pavements, especially on Keswick Lane, Margaret Avenue, Mill Lane but also other areas of the village. Please consider your neighbours and cut back hedges, especially if they are narrowing the pavements and becoming a danger to pedestrians. Please also have consideration for people in wheelchairs and parents with prams and pushchairs.

## **Future meetings**

The next two meetings will be held on Wednesday 23 October and Wednesday 20 November at 7.00 pm in Bardsey Village Hall Committee Room

The first ten minutes will be set aside to deal with any issues raised by residents. Our clerk's e-mail address is:

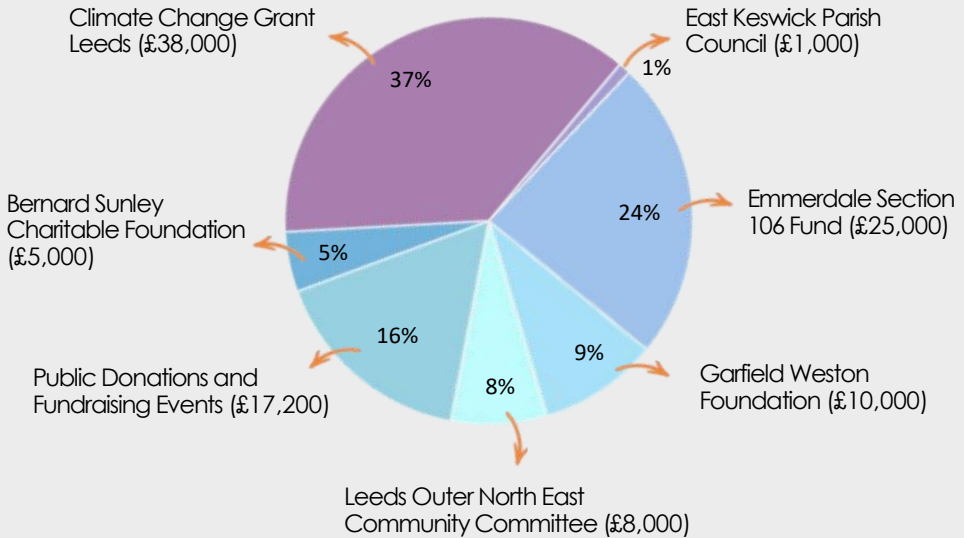
**[clerk@bardseyparishcouncil.gov.uk](mailto:clerk@bardseyparishcouncil.gov.uk)**

Full minutes and other information is published each month on our village website **[www.bardseyvillage.org.uk](http://www.bardseyvillage.org.uk)**

# East Keswick Village Hall Secures Funding and Confirms Purchase of Illingworth Field

East Keswick Village Hall has secured over £105,000 in financial support towards purchasing Illingworth Field and its future development.

## THE FINANCIAL SUPPORT INCLUDED



## We could not have done this without you!



"I'm pleased that the community has been able to work together to provide additional amenity space for the village, including a grant from the Emmerdale Fund, which was established to support the restoration of heritage assets or the provision of new recreational projects."

**Councillor Ryan Stephenson, Chairman of the Emmerdale Fund**

Other grant providers also include:





# East Keswick Climate Change Garden

## EXCITING PLANS AHEAD

The Illingworth Field public consultation results, gathered during 2023-24, helped inform the design and development plan of East Keswick Climate Change Garden. A summary of public consultation results is available on East Keswick Village Hall website: *Public Consultation - Illingworth Field*.

As a rural village, we are very proud and fortunate to have our own wildlife trust. East Keswick Wildlife Trust has been working with and guiding the Village Hall Trustees since the inception of this project. The primary aim on the development of this field will be the retention of community green space, incorporating a focus on the challenges of climate change for the local environment and the Village Hall's sustainability.

### Our key objectives are to:

**Enhance biodiversity** by creating new habitats, thereby improving and connecting existing local multi-functional green corridors. This offers the potential for wider links around the parish and beyond,

including Ellikers Nature Reserve to the north of our East Keswick Climate Change Garden.

**Provide outdoor learning space** for the local and wider community to reinforce how careful environmental husbandry contributes positively to climate change.

**Work towards the Village Hall achieving carbon neutral status by 2030** from its current annual emission rate of 2,644 kg CO<sub>2</sub>, by introducing creative green solutions.

**Foster an inter-generational approach** that creates a positive environmental legacy for future generations.

**Broaden the range of** inclusive, safe and healthy outdoor activities and events.

**Please get involved and give a helping hand.**

You don't need special skills or loads of time to get involved. Get in touch to learn more about how you can help make the East Keswick Climate Change Garden a reality.

If you are interested in offering a helping hand or providing specialist advice in the area of carbon reduction, building retrofitting, or renewable technologies, please email:

[climatechangegarden@eastkeswickvillagehall.org](mailto:climatechangegarden@eastkeswickvillagehall.org)



# Bardsey & East Keswick Running Club



On 8 September, 10 of our members went to the north east to embark on the Great North Run. Training started in May, building up the miles and speed. The race might only be 13 miles but some runners were putting in over 50 miles a week to ensure they were ready for the day.

At 11am we set off, 10 amongst 60,000. 1hr 33 mins later Jake crossed the line, closely followed by Richard and Jack. In all seven of our runners achieved half marathon personal bests. A phenomenal achievement, all down to the training we did and our dedication.

Why not come and join us and see what you could also achieve. We now have a dedicated 5k group running during our Monday,

Wednesday and Sunday sessions, for those who are able to run but need the encouragement to keep going. Within these sessions we also have 5-mile and 8-mile+ groups available.

Our 'Couch to 5K' will also be starting for complete beginners in January.

Our sessions times are;

Mondays 6:30 pm

Wednesdays 7:30 pm

Fridays 9:20 am

Sundays 10.00 am

Contact us through Facebook or on **07508 601294**

# Bardsey Bowling Club

## COFFEE MORNING

We would proudly like to announce Santa's appearance at our Christmas themed coffee morning on **Saturday 16 November** from 10.00am - 12.30pm, in Bardsey Village Hall.

A bag of goodies awaits every child that visits him in his grotto with a chance to chat to Mrs Claus too. Early bird bacon butties are on the menu as well as the drinks and mince pies. Take your time to browse the Christmas decorations, gift items, greetings cards and treat yourself to something from the homemade preserves, cakes and bakes tables.

**NEW:** Tombola tables for children and adults with a prize for every ticket you buy!

**NEW:** Dolls from around the world – a game to test your knowledge to win a prize.

Don't forget your raffle tickets! The raffle prizes include a large Christmas hamper, vouchers from local businesses, wine, chocolates, and a wide range of useful fashionable or tasty items.

Put the date in your diary now. Who knows what other treats and surprises may be added to the event between now and then! Remember, this is the coffee morning where **'Everyone is a Winner'**.

Further details will be given on Facebook, leaflets and posters as we get closer to the event.



# Callister Hall

Have you been to the Callister Hall recently? We've had a little makeover. Why not come along and have a look. We are on Woodacre Lane in Bardsey, opposite the Village Hall.

The hall has capacity for up to 60 people and is ideal for functions, meetings, groups, and children's parties.

For bookings and hire rates please contact Catriona in the Parish Office on;

**01937 574273**

**[bardseyparishchurch@gmail.com](mailto:bardseyparishchurch@gmail.com)**



## Bardsey and East Keswick Arts Festival

**19-20 October**

10.00am - 4.00pm

Bardsey Village Hall and  
Callister Hall

Bardsey and East Keswick art groups are putting on a joint art show, exhibiting a wide range of work by local artists, including original paintings, together with prints and cards.

There will also be a range of craft stalls including jewellery and stitch work, and a raffle, offering the chance to win a luxury hamper. Tea and homemade cake will be available to supplement your artistic tastes.

A contribution from the show will be made to St Gemma's Hospice.

# East Keswick Methodist Church

## SERVICES

All services are at 10.30am unless otherwise stated. We welcome all and everyone to our services and to join us for tea or coffee after the service.

### 6 OCTOBER

United Harvest Service at Collingham

### 13 OCTOBER

Rev Uell Kennedy

### 20 OCTOBER

Dr Alan Bell

### 27 OCTOBER

Rev Ann Fox, Communion Service

### 3 NOVEMBER - 11.00am

United Service at All Hallows, Bardsey

### 10 NOVEMBER - 10.15am

Nick Payling, Café Church

### 17 NOVEMBER

Mr David Mountain

### 24 NOVEMBER

Rev K Marshall, Communion Service

East Keswick Methodist Church  
Main Street, East Keswick, LS17 9EJ

T: 01937 573434

Free Wi-Fi now available

**Church Steward: Penny Harrison**

## SOUPER THURSDAY

Please do join us for warming soups and puddings on **31 October** and **28 November**.

Please note we won't be offering a lunch in December.

## CHRISTMAS SHOEBOX APPEAL

In October we will be joining with Collingham Methodist Church to support the "Love in a Box" initiative, by decorating and filling shoeboxes, which will be sent to

vulnerable children in Romania for Christmas. Small toys, puzzles, balls, stationery, colouring books, gloves, scarves, hats, hair slides and toiletries (especially needed are toothpaste, toothbrushes, flannels and soap) are just some of the items that can be included in the boxes. If you would like to help by donating some items, please contact Penny on **01937 573434**, who will arrange for the items to be collected.

## FRIENDS AND FELLOWSHIP AT EKMC

A welcome waits for everybody, monthly, on Monday afternoons, beginning on 14 October, from 2.00 - 3.30pm, to chat over a cup of tea/coffee, with an opportunity to hear more about, and discuss the Bible. Bring your knitting or sewing along with you and bring a friend. Find us in the Methodist Church Hall on Main Street.



## OUR HARVEST GARDEN

*Our garden has a harvest  
Of its very own...*

*Where seeds and berries everywhere  
Around the church have grown.*

*The birds enjoy our harvest,  
The squirrels too are fed  
And store the bounty, ready  
For their winter bed...*

*Our bug hotel is all prepared  
To welcome winter guests,  
Sheltering from snows and icy blasts -  
Hospitality at its best!*

**Christine Burton**





**EAST KESWICK  
METHODIST CHURCH**

Invites you to join us  
for a fun filled

**Christmas  
Craft  
Afternoon**

**Saturday 30  
November  
2.00 – 3.30pm**

All materials and refreshments provided.  
Contact Penny for further information on  
**01937 573434**

# East Keswick Flower Club

Janita Dediccoat

With three quarters of the year already gone, we can reflect on the lovely times we have enjoyed together so far. A great mix of demonstrations, workshops and fun.

Our well attended fundraising, vintage afternoon tea and fashion show, 'Silk and Roses', with Lucy Adlington, from the History Wardrobe, was very enjoyable and a great success.

Now for more to come.

## **17 OCTOBER**

A demonstration by Alex Gracey entitled 'Coco Chanel', which sounds very interesting. Why not come along and see for yourself? You will be made most welcome.

## **29 NOVEMBER**

Our main end-of-year event is our ever popular Christmas demonstration, which this year sees a return visit by Mark Entwistle, by popular request, whose demonstration is entitled 'Snow Storm'.

## **5 DECEMBER**

A Christmas outing to Renishaw Hall in Derbyshire.

I wish to thank the hard working ladies of the committee and the helpers for all their support and loyalty throughout the year. I particularly want to thank everyone who supports our open events. It is very much appreciated and helps make the successful club that we have today - which is nearing its 55 year emerald anniversary.

## **Christmas Demonstration Friday 29 November**

Title: Snow Storm  
Demonstrator: Mark  
Entwistle

East Keswick Village Hall,  
Doors open at 1.00pm for 1.30pm

**Tickets £20**

(To include after show  
refreshments)

Available from Sue Cooper  
**01937 583831**

*Please inform Sue of all food intolerances*



# Bardsey Tennis Club



Following a very successful Open Day in September, with many members of the local community joining in, the club has been awarded a grant from the 'Outer North East Leeds Community Fund', towards the cost of re-surfacing the courts.

Our ward councillor, Matthew Robinson presented us with a very generous cheque for £5,000. Many thanks to Matthew, Ryan

Stephenson, Sam Firth and everyone involved at Leeds City Council, we are very grateful.

Also a big thank you to all the club members and others who helped raise the money and also thanks to local businesses, the Parish Council and many other donors who sponsored our fundraising event last March.

Our next big step will be to raise more money for a new clubhouse - watch this space.

## Autumn Has Arrived

The start of autumn can be the cause of much discussion and disagreement. For many it can simply be a feeling - the sights and sounds of nature; nights drawing in; temperatures feeling cooler; leaves starting to fall; or even the start of the new school term! For some it may even be when the clocks go back.

As for the 'official start', well there are in fact two separate dates which could be said to mark that in our calendars. One is defined by the Earth's axis and its orbit around the Sun, known as astronomical autumn, and the second is a fixed date, which is used by meteorologists for consistent spacing and lengths of the seasons.

Usually, when we talk about the first day of autumn we are referring to the astronomical autumn, which this year fell on **Sunday 22 September**. By the

meteorological calendar, the first day of autumn is always 1 September, because meteorological seasons are derived by splitting the year into four periods made up of three months each.

Autumn is a season of transition between summer and winter but in our modern temperate climate the weather alone cannot be used to distinguish it.

It can get lost between those late summer holidays and the charge towards Christmas, with suncream, mince pies and tinsel vying for retail space alongside pumpkins, fireworks and poppies.

John Keats described it as 'the season of mists and mellow fruitfulness', providing a chance relax, to take stock, reflect on the warmth of the summer gone and prepare for the darkness of winter to come.

So settle down in a comfy chair and enjoy the beauty and peace of this season.

THE CLOCKS GO BACK  
ON **SUNDAY 27 OCTOBER**



# HAREWOOD POLICE AND COMMUNITIES TOGETHER MEETING

Thursday 24 October 2024  
18:30 - 20:00pm

**Venue:** East Keswick Village Hall, School Lane, LS17 9DA.

Officers and a local ward councillor look forward to meeting and speaking with residents about local priorities, issues and concerns.



## CHARITY JIGSAW BONANZA

*Raising funds to help children with cancer*



**Saturday**  
**5th October**  
**9.30am - 4.30pm**

**Bardsey Village Hall,  
Woodacre Lane,  
Bardsey, LS17 9DG**



Join us for the sale of hundreds of mainly pre-owned puzzles for all ages and interests, and visit our café which will be selling hot and cold refreshments, as well as a selection of delicious cakes and biscuits!

£1 (**cash only**) entry fee. The café and jigsaw stall will have credit/debit card machines.

All proceeds go to Candlelighters, a local charity that supports the families of children with cancer in Yorkshire. If you are unable to come but would like to make a donation please visit our website or contact Corinne at [corinnedicker@yahoo.co.uk](mailto:corinnedicker@yahoo.co.uk) or 07741 880467

[www.candlelighters.org.uk](http://www.candlelighters.org.uk)



# East Keswick Wildlife Trust

Elaine Wooley

## Gathering Wildflower Seeds

During August and September, a group of our Friday volunteers collected a wide variety of wildflower seeds from our nature reserves. EKWT is probably quite unique, as our wildflower and tree seeds are collected within a five mile radius of the village. Keeping our local gene pool of seeds is important, as those introduced from unknown origins may have a different genetic structure. We therefore do not buy in any seed. If you are buying wildflower seeds to sow in your garden, we suggest that you try to buy UK grown wildflower seeds rather than those that state 'packed in the UK'.

The reason for collecting the seeds is to increase biodiversity on our reserves. Different native wild flowers, trees and shrubs support a wide range of animals, plants and micro-organisms and are necessary for healthy ecosystems. For example, dandelions support more than 50 species of insect, bird's-foot-trefoil over 130 and oak trees over 2,300!

We have a wildflower nursery with four tables of mainly uncommon wildflowers. These wildflowers are grown in pots for around three years, before planting out and so need attention each spring to remove any weeds that invade the pots.

We have plug planted these wildflowers onto our reserves to enhance the biodiversity and also provided plants for the churches in East Keswick to improve their churchyard's flora and fauna.

We are now planning to use the seeds we have collected this year in Bardsey Fields. Grazing, cutting and scarifying will remove the dense grass sward over the winter months. This will enable sown wildflower seeds and plug plants to become established.

For information about East Keswick Wildlife Trust and how you can join or volunteer please go to [www.ekwt.org.uk](http://www.ekwt.org.uk) or telephone **01937 574140**.



## THE SEED GATHERERS

**S**ilently bending over their plants,  
**E**choes of ancient hunter gatherers,  
**E**ntwives of Tolkien's Middle Earth,  
**D**elicately ease seeds from the flower heads.

**G**leaning their prize from meadow and wood,  
**A**vens, Cowslips, and Cranesbill collected,  
**T**easing the Teasels, Toadflax and Tansy,  
**H**arvesting Harebells and Bluebells alike,  
**E**ncapsulated life in one tiny pod.  
**R**escue them, store them safe for a while then  
**S**ow in the spring when the sun warms the earth

## By Jinny Casey

(Inspired by a day gathering seeds with the EKWT Girl Fridays)

# East Keswick Local History Group

Peter Harding

We have two upcoming talks, in East Keswick Village Hall, followed by refreshments. These are free for members and £5 for non-members, or £10 for annual membership.

## **BERENBLUM AND THE BARI BOMBS** **Thursday 7 November, 8.00pm**



An illustrated talk by Andy Wilson, Engagement Manager at Yorkshire Cancer Research, recounting how tragic incidents in both World Wars, and the research of Isaac Berenblum

in Leeds, contributed to the discovery of Chemotherapy.

There are many people who think they know the story of how chemotherapy was developed but in fact know only half the tale. Join us to learn the whole story.

## **JOHN HARTLEY (1839-1915)** **Thursday 12 December, 8.00pm**

A talk by Rod Dimbleby, Chair of the Yorkshire Dialect Society.



John Hartley was the most prolific of 19th century Yorkshire dialect writers. His work is a great reflection of what life was like in the 19th century, including stories

with humour, poems with pathos and comment on the social scene.

# East Keswick WI Update

Elizabeth Ward

August found us in the garden of our President, Pauline, enjoying lots of cake, a quiz and much conversation.

In September David Hardcastle, a former police officer, brought his "Mobile Police Museum", which he had set up when he retired. His collection of police memorabilia is immense and we were taken on a fascinating journey from the formation of 'The Met', in 1829, to policing today.

Tickets are now available to hear Lucy Adlington tell us that "Monday is Washday", at Bardsey Village Hall on **Wednesday 23 October, 7.30pm.**

## **FUTURE EVENTS**

### **8 October**

Aloe Vera by Sue Firth  
Competition: A health remedy

### **12 November**

AGM and The Yorkshire Air Ambulance  
Competition: A transport photograph

Meetings are held at East Keswick Village Hall at 2.00pm on the second Tuesday of each month. Visitors are always welcome to join us for a cup of tea and a chat.

theWI  
INSPIRING WOMEN

# East Keswick Village Hall

# 12th of October 2024

## COMMUNITY CELEBRATION & OPEN DAY

MAIN TALK OF THE DAY: 3.00pm

### ILLINGWORTH FIELD

OUR FUTURE PLANS

TOUR OF A FUTURE  
"CLIMATE CHANGE  
GARDEN"

CHAT TO OUR PARTNERS  
IN THE EAST KESWICK  
WILDLIFE TRUST

**FROM 1-3 PM**

(\*bring your wellies)

### MEET OUR LOCAL CLUBS

FAMILY STITCH  
& FLOWER SESSION

FAMILY YOGA

TODDLER CLUB SESSION

GET TO KNOW OUR  
LOCAL CLUBS

**VARIOUS TIMES**

(check the schedule)

### CHAT AND TEA & CAKE

ENJOY TEA & COFFEE

MEET YOUR COMMUNITY

TALK TO OUR TRUSTEES

**FROM: 3-5 PM**

FOR MORE INFORMATION:



<https://www.eastkeswickvillagehall.org/>



# Eco Chat: Green Money

There is strong evidence to suggest that burning fossil fuels is the main cause of climate change and if we are to tackle it effectively they need to stay in the ground, not be extracted for use in our cars, planes and power stations.

In 2021, the International Energy Agency stressed the need to end the exploration for new fossil fuels immediately, but unfortunately we are still spending billions of pounds doing the opposite, without most of us realising that it is **our money that is being used to fund it!**

In 2023 the five big high street banks, Barclays, HSBC, Lloyds, Natwest and Santander, provided £45 billion in finance to fossil fuel companies. So, inadvertently, you are contributing to the creation of further carbon emissions by simply putting your savings and investments into banks like these.

UK pension schemes also invest a staggering £88 billion in fossil fuel companies. That's £3,000 per pension holder, in oil and gas companies, which is helping them to

expand operations and develop new fossil fuels, despite the science being clear this must end.

Greening our pensions is the most powerful thing we can do to protect the planet. It can cut our carbon footprint by 21x more than going veggie, giving up flying and switching energy providers combined.

But changing pension providers is not easy, particularly if you have a worked-based one from previous employers, but if you have a private pension or are thinking of starting one then consider the green options first.

Switching banks to a more environmentally concerned provider is much easier and quicker to do. Banks that do not finance fossil fuels at all include, The Co-operative, Nationwide and Starling, and there are others.

None of the top 20 UK pension providers perform particularly well in terms of their fossil fuel investments but Aviva and Legal & General rank as two of the best when considering a wider range of environmental policies.

You can find out more about greening your finances at;

[www.makemymoneymatter.co.uk](http://www.makemymoneymatter.co.uk)





# Bardsey cum Rigton WI Update

Carol Cocker

I am writing this in advance of a visit to nearby York Gate Garden, on **20 September**, with a small number of members of our group, and hoping for ideas for the autumn garden. It will of course include afternoon tea.

**23 October** is the date of the next Golden Plover meeting in Bardsey Village Hall. It is a Wednesday because the popular Lucy Adlington reminds us that "Monday is Washday". A look back at how we used to carry out those household chores. Tickets are selling fast and all are welcome.

Textile artist, Linda Hume captivated our members at the September meeting with her amazing felt-work, beaded animals and other items. She draws inspiration from the natural world in both the UK and her native USA. She is currently involved in a major project at Armlay Industrial Museum. It runs until 25 May next year and would be well worth a visit.

Next month's guest on **9 October** is Adele Long, whose passion is mountaineering. The competition is 'a mountain', but please bear in mind the size of our display table!

As the arrangements for the food share collection in support of St Aiden's parish have changed following the departure of the vicar, we have decided to encourage members, for convenience, to bring contributions to our monthly meeting. As we move into the autumn and winter, your contributions will be especially welcome.

Looking ahead we will be holding our AGM as usual on **13 November**, when we will have a preview of the coming year's programme and all too soon it will be Christmas party season.

We meet in Bardsey Village Hall on the second Wednesday of the month at 7:30pm. We always make time for refreshments and an informal chat – an ideal way to meet friends if you are new to the village. Visitors are always warmly welcomed.

theWI  
INSPIRING WOMEN

# Cinema Night

Our next Cinema Night season starts in October with the film *'Are You There God? It's Me, Margaret'*, a coming-of-age, comedy drama, about 11-year old Margaret and her family.

Then in November we are screening *'Living'*, which stars Bill Nighy in a highly acclaimed role as an aging, bowler-hatted bureaucrat, who takes stock of his life after a health scare and sets out to become the best person he can before he goes.

Doors open from 7pm for a 7.30pm start.



Friday 25 October



Friday 29 November

## Churches Together Quiz Night

Friday 15 November, 7.00pm  
East Keswick Village Hall

On this, the third East Keswick and Bardsey Churches Together charity quiz night, we will be raising funds for the Ukraine crisis and Zarach, a Leeds based charity providing beds for children.

Teams can be 4-6 people. You can either bring a whole team or we can find you some teammates.

### TICKETS £10 EACH

This includes pie & peas, a pudd and a fantastic night of quizzing. They will be available from **15 October**, directly from **Charlotte Meek** or email [meekfamily@hotmail.co.uk](mailto:meekfamily@hotmail.co.uk)



To sign up:  
[www.eastkeswickvillagehall.org/village-hall-draw](http://www.eastkeswickvillagehall.org/village-hall-draw)



**EAST KESWICK**  
VILLAGE HALL

Village Hall Prize Draw  
**NEW FOR 2025**

**UP TO £600**

An annual subscription of £30 entitles you to enter five draws a year and the opportunity to win a prize of £100, £60, £40 at each one.

In addition, there is an annual event where a further draw takes place, and you can win £600, £400 or £200.

**2025 DISCOUNT**  
for brand new subscribers

New Rewards for the price of the old subscription (£20) until 31st Dec.2024

**Where is the money going to?**

The Village Hall Committee organises the draw to raise funds to assist in the hall's day-to-day running, maintenance and development. As many of you will already know, the hall is a fantastic facility which is available for all villagers and their families to use and enjoy.

## Village Facilities, Clubs and Community Groups

## Village Voices



We are a community choir, made up of local residents who just like to sing. We meet on Thursday evenings during term time from 7.30 - 8.30pm, to rehearse, in East Keswick Methodist Church. Our repertoire (always changing) ranges from well-known singalongs from past decades, through traditional folk songs, to pop classics and blockbuster musical theatre numbers.

Anyone with an interest in just singing for fun is welcome to join us.

For further information contact Charlotte Meek ([meekfamily@hotmail.co.uk](mailto:meekfamily@hotmail.co.uk)) or Jim and Janita Dediccoat (01937 573923)

## East Keswick Playgroup

Providing a fun and relaxed environment for parents, carers and pre-school babies and children. Varied activities including play, craft, singing and themes.

Tea, coffee and biscuits provided.

**Every Thursday During  
Term-time, 10.00 - 11.30  
East Keswick Village Hall**

For more information contact Beth  
[kilnerbeth@gmail.com](mailto:kilnerbeth@gmail.com) / 07756 335633

Find us on Instagram  
[@eastkeswickplaygroup](https://www.instagram.com/eastkeswickplaygroup)

## Callister Café

**Second Tuesday of the Month,  
12.45-2.00pm, Callister Hall, Bardsey**

Join us for a soup and pudding lunch. Open to anyone who lives locally. No charge, but donations to St Aidan's Foodshare are welcomed. Contact the Parish Office for more details on 01937 574273



## METHODIST CHURCH MAIN STREET - EAST KESWICK



### MEETING ROOMS FOR HIRE

Seating for up to 80 people • Fast broadband • Large screen TV with full connectivity • Well-equipped kitchen • Modern cloakroom facilities • Secure garden with two patio areas and outdoor furniture

For bookings and current rates contact Donah:

**01937 574603 / 07914 043836**

For further details visit our website: [www.ekmc.org.uk](http://www.ekmc.org.uk)





## Bardsey Sports Club

CRICKET – FOOTBALL – RUNNING - YOGA

- Licensed bar
- Free off-road parking
- Function room and grounds available for hire

For more information contact Jo at:  
[bardseysportsclub@gmail.com](mailto:bardseysportsclub@gmail.com)  
**07807 217663**

EVERYONE IS WELCOME

# BARDSEY ARTS

OFFERING TUITION IN

- \* Painting & Drawing
- \* Felt Making
- \* Silver Jewellery Making
- \* Bas Relief Botanical Tiles

Details from Ailsa Read

**01937 572709**

**07831 326309**

## Bardsey Nursery

For pre-schoolers aged 2-5 all year round, 07.30 - 18.00.

We also offer wraparound care and holiday clubs for school children.

Our bright airy space and wonderful leafy grounds are just perfect for exploring. Come and say hello!

Bardsey Primary School

**01937 573999**

[bardsey@childrenscornerchildcare.co.uk](mailto:bardsey@childrenscornerchildcare.co.uk)



## CALLISTER HALL

WOODACRE LANE, BARDSEY

**For private functions and meetings**

Well-equipped kitchen available.

For bookings and current hire rates please contact the Parish Office.

**01937 574273**

[bardseyparishchur@btinternet.com](mailto:bardseyparishchur@btinternet.com)



## NEEDLE AND THREAD GROUP

Third Monday of the month in East Keswick Village Hall from 1.00 - 4.00pm.

All types of needlework. Come and join us to learn or share skills and socialise. For further information please contact Heather on

**07747 145422**

## BARDSEY VILLAGE HALL

BOOKINGS - ROSIE STENTIFORD

**01937 572652**

Main Hall • Stage • Kitchen • Carpark  
AVAILABLE FOR HIRE

## VOLUNTARY TRANSPORT GROUP

Please get in touch if you need transport to the hospital, the doctors, the dentist or prescription collection, shopping or a hairdressing appointment. We also have wheelchairs for loan.

### In Bardsey Call:

Pauline Hills on 573083 / 07535 692366  
Lynn or Brian Tungate on 574679 / 07921 777790

### In East Keswick Call:

Susan Priestley on 572227 or Gaynor Anning on 572890

# Services Directory



*Over 25 years experience*

## East Keswick Roofing Ltd

Your Trusted Roofer - Neil Halliday  
[07956 500669](tel:07956500669)

Fully insured. Local resident for 20 years. All aspects of roofing undertaken. Large enough to compete, small enough to care.



## BARDSEY

TREE SERVICES LTD

### TREE SURGEONS & ARBORICULTURAL CONTRACTORS

ALL ASPECTS OF TREE SURGERY & FELLING • HEDGE CUTTING/REMOVAL • STUMP GRINDING • SITE CLEARANCE FOR RESIDENTIAL & CONSTRUCTION INDUSTRY • WOODCHIP SUPPLIERS • TPO/CONSERVATION AREA CHECKS & FREE APPLICATIONS • TREE SURVEYS & REPORTS / FREE ESTIMATES • EMERGENCY CALL OUT • £10 MILLION PUBLIC LIABILITY INSURANCE

**01937 573689**

[www.bardseytrees.co.uk](http://www.bardseytrees.co.uk)  
[info@bardseytrees.co.uk](mailto:info@bardseytrees.co.uk)





LANDSCAPING SERVICES LTD  
landscape & fencing contractors

Local, reliable and professional services for all aspects of hard and soft landscaping  
For more information and a FREE ESTIMATE call

**01937 579117**

jmaservicesltd@yahoo.co.uk  
www.jmalandscaping.co.uk



## Bardsey Garden Services

Grass Maintenance ▪ Patios & Paving  
Fencing & Hedging

Call Andy on

**01937 573160**

**07964 180975**

Bardsey based - City & Guilds NPTC

*Parker Hartley & Co*

**Incorporated Financial Accountants**

**Services Provided**

- ✓ Advice on setting up your business
- ✓ Annual accounts preparation
- ✓ Bookkeeping and preparation of VAT returns using MTD
- ✓ Payroll and auto enrolment
- ✓ Tax returns

**07723 027301**

info@parkerhartley.co.uk

www.parkerhartley.co.uk



## GRAHAM LANDSCAPES

- Drives & Decking
- Fencing & Walls
- Gardens & Gates
- Patios, Pergolas & Paths
- Paving & Power Washing
- Resin Bound Gravel
- Turfing & Tidying

Free advice & estimates  
12 month guarantee  
£2 million liability cover

**01937 580607**

**07752 093361**

*The award winning garden builders*

## Dalby Landscapes

Landscape gardening, fencing & general garden maintenance ▪ Weekly, fortnightly or one-off garden tidy ▪ All aspects of tree services undertaken

Nigel Dalby **07752 586566**

Ben Dalby **07840 442628 / 01937 574583**

www.dalbylandscapes.co.uk

## CABINET MAKER / FRENCH POLISHER

Also floor sanding and re-polishing  
**Edward W. Vickerman**

**01132 738242 / 07917 224455**

247 Main Street, Shadwell, Leeds, LS17 8LA



**S.P. Harrison**

**Painting & Decorating**

Quality paperhanging & painting

**01132 813956 / 07961 181848**





## EAST KESWICK VILLAGE HALL

The perfect venue for all occasions with spacious function rooms, ample parking and disabled access.

- Main Hall for your function
- Stunning garden with countryside views
- Medium Room on the side
- Stage & Terrace
- Kitchen & Bar



**EAST KESWICK**  
VILLAGE HALL

To visit or contact us please visit: [www.eastkeswickvillagehall.org](http://www.eastkeswickvillagehall.org)



## DEVELOPING EXCLUSIVE NEW BUILD AND CONVERSION HOMES IN THE BEST LOCATIONS

To discuss how we can unlock the value of land or buildings that you may wish to sell or for details of forthcoming developments please contact our award winning team.

**0113 268 3416**

[info@parklanehomes.co.uk](mailto:info@parklanehomes.co.uk)  
[www.parklanehomes.co.uk](http://www.parklanehomes.co.uk)

SCAN FOR WEBSITE



MODERN CLASSICS





# Audley Scarcroft Park



LUXURY RETIREMENT VILLAGE



Set within 110 acres of beautiful land, and close to Leeds, Audley Scarcroft Park is now open and offers 172 luxury properties in and around the restored Grade II listed building.



Find out more  
audleyvillages.  
co.uk/leeds

0113 397 1405

Hellwood Lane,  
Scarcroft, Leeds  
LS14 3HS

*It can only be Audley.*

# Buywell interiors

Fitted Kitchens, Bedrooms and Home Office Solutions



**BUY LOCAL - BUY BRITISH - BUY WELL**

UNIT 155, AVENUE B,  
THORP ARCH ESTATE, LS23 7BJ

Tel: 01937 844288  
[www.buywellinteriors.co.uk](http://www.buywellinteriors.co.uk)



DO YOU KNOW HOW MUCH  
YOUR PROPERTY IS WORTH?





For a FREE instant valuation  
simply scan this QR code

or visit  
[www.furnellresidential.co.uk](http://www.furnellresidential.co.uk)



*Your home, our business*

t: 01937 574685  

The Hayloft, Cornmill Lane, Bardsey, Leeds LS17 9EQ

## **NEED HELP WITH A COMPUTER / SMARTPHONE /TABLET / TV?**

I come to you ▪ Windows setup & support ▪ email help ▪ PC tune up ▪ one-to-one tuition ▪ PC/laptop ▪ data backup & transfer ▪ smartphone/tablet/printer/broadband/wi-fi support

### **Thinking of buying a new computer/smartphone/tablet/printer/TV?**

Speak to me first for advice on buying the right item at the right price.

### **Improve your online security**

Have you been hacked/scammed? Forgotten passwords?

### **Paying too much for broadband/TV/landline/mobile contract?**

I may be able to get you a better deal. You could save BIG money £££

Need help with TV setup/retune or getting Netflix, Amazon Prime, Disney+, Paramount+, catchup TV (BBC iPlayer/ITV/C4, etc.)? Setup and learn to use Amazon Echo, Fire Stick, Kindle, WhatsApp, Skype, Zoom and much more besides.

Contact **Lee Goodman** for more information (Est. 2009).

**lee\_gee66@hotmail.com / 01132 698466 / 07941 281558**

## **THORNER FLOORING SERVICES**

All types of floor covering supplied and fitted

**CARPETS ▪ RUGS ▪ VINYLs ▪ WOOD**

8 St. Peter's Garth, Thorner, Leeds, LS14 3EE

THE MOBILE SHOWROOM WITH 1000'S OF SAMPLES BROUGHT TO YOUR DOOR



**01132 892344**

**07774 171744**

[craig@thornerflooring.co.uk](mailto:craig@thornerflooring.co.uk)

[www.thornerflooring.co.uk](http://www.thornerflooring.co.uk)

Find us on 



## **COUNSELLING - ADRIENNE CREW (MBACP)**

Registered member of the British Association  
for Counselling & Psychotherapy

Counselling can provide valuable support when there is a crisis.

I can offer help with the following;

**RELATIONSHIPS ▪ COUPLE COUNSELLING ▪ DEPRESSION  
BEREAVEMENT ▪ WORK LIFE BALANCE ▪ ANXIETY ▪ ANGER ISSUES  
▪ LOW SELF-ESTEEM**

**T: 07715 267676 / E: [adrienne.e2@gmail.com](mailto:adrienne.e2@gmail.com)**

[www.adriennecrew.co.uk](http://www.adriennecrew.co.uk)

## GREYSTONES - STAITHES

Furnished holiday home to rent in the heart of the old village on the picturesque East Coast.

**Sleeps 9 in 5 bedrooms (1 En Suite)**

Ideal for long weekends, midweek breaks and family holidays.

**01937 574177 / 07850 704344**

[www.greystones-staithes.co.uk](http://www.greystones-staithes.co.uk)



**HEATING OIL DIRECT TO YOUR HOME  
STORAGE TANK SUPPLY AND INSTALLATION  
EMERGENCY SERVICE & SATURDAY DELIVERY**

**WWW.TATEOIL.CO.UK  
CALL: 08456 43 44 43**

LEEDS ROAD, OTLEY, W. YORKS, LS21 3BB



**LOCKFARR LOCKSMITH & CCTV**

**Norman Farrar**

MPL NATIONALLY TRAINED LOCKSMITH  
FULLY TRAINED CCTV INSTALLER

**07760 111418**

[norman\\_farrar@hotmail.com](mailto:norman_farrar@hotmail.com)

Find us on Facebook – Lockfarr Locksmith and CCTV

## ANTHONY SHORTALL

Your local

**PAINTER & DECORATOR**

City & Guilds Qualified  
Apprentice Trained

No job too small or too large

**01133 930960 / 07711 706679**



## Local Electrician

**LS22 Electrical Ltd**

(Est. 1982)



- ✓ All aspects of domestic electrical installations
- ✓ New installations, alterations & repairs
- ✓ Telephone & computer cable installations & repairs
- ✓ No job too small!!!
- ✓ Competitive, efficient, tidy & friendly service

For advice or to arrange a visit call Geoff on;

**07791 844305**

E: [service@ls22electrical.co.uk](mailto:service@ls22electrical.co.uk)

## SAM WATTS

**ALL PLUMBING INSTALLATIONS  
AND REPAIRS**

Free estimates ▪ No call out charges ▪ No job too small ▪ City & Guilds certified

**07759 060709**



Professional  
**PLUMBING & HEATING**

Engineers



Bathrooms ▪ Glazing ▪ Gas Installations

**M. MARTIN**

(ENG TECH, LCGI, MCPHPE, RP, GAS SAFE REGISTERED)

Established 1981 - Fully Insured

**01132 737197 / 07850 971471**

[www.leedspumbingandheating.co.uk](http://www.leedspumbingandheating.co.uk)

[enquiries@leedspumbingandheating.co.uk](mailto:enquiries@leedspumbingandheating.co.uk)

707 Shadwell Lane, Shadwell, LS17 8ET

## SARAH KAY HOLISTICS

Reflexology ▪ Zone Face Lift ▪ Massage

**07940 769352**

FHT and AoR registered (Est. 2018)



When home/office admin needs doing...  
but it's just not your thing



**HELP!** is just a 'phone call away

David Bransby  
your-p-a-leeds.co.uk  
07853 257 662



## HYLAND BUILDERS LTD

Building, Roofing and Glazing Contractors

DOMESTIC, INDUSTRIAL AND COMMERCIAL - EXTENSIONS & ALTERATIONS  
SPECIALISTS FOR ALL YOUR BUILDING AND MAINTENANCE NEEDS

Established 1974

Flat Roof Specialists • Roof Repairs (strip & recovers) • Replacement Windows & Double Glazing • Drainage • Drives • Garden Walling • Paving (slab or block) • Fencing • Landscape Gardening • Plastering • Pebble Dashing • Pointing • Guttering & Fall-pipes • Painting & Decorating • Security • Services • UPVC, Facias & Cladding

**LEEDS CITY COUNCIL APPROVED - GRANT WORK - ALL WORK GUARANTEED**

**24 HOUR EMERGENCY SERVICES FOR GLAZING, PLUMBING & BLOCKED DRAINS**

*(The impossible we can do immediately, miracles take a little longer)*



FOR ADVICE AND PERSONAL ATTENTION CALL

**07710 099596 or 01937 572596 (24hrs)**

10 ROSE CROFT, EAST KESWICK, LEEDS, LS17 9HR



**SFR**  
**PLUMBING**  
**& HEATING**

- \* New Boiler Installations & Service
- \* Cookers & Fires
- \* Landlords Gas Safety Certificates
- \* Unvented Systems

- \* New & Replacement Radiators
- \* Power Flushes
- \* Shower & Bathroom Suites
- \* Tiling
- \* Repairs & Maintenance

Contact Stefan

**07833 476 252**

www.sfrplumbingandheating.co.uk  
sfrplumbingandheating@gmail.com





SCAN FOR



WEBSITE



# Wood View

SPORTS MASSAGE & HOLISTIC THERAPIES

Relax | Renew | Revive



Sports Massage  
Therapeutic Massage  
Aromatherapy Massage  
Pregnancy Massage  
Reflexology



Practicing from Hetchell Court in Bardsey  
Weekdays 9am to 9pm and Saturday 9am to 12pm

**07590 950083**

[www.woodviewtherapies.co.uk](http://www.woodviewtherapies.co.uk)

3 Hetchell Court, Bardsey, Leeds LS17 9BY



## TAKE STEPS TOWARDS BETTER FOOT HEALTH IN 2024



### Choose Bardsey Foot Clinic!

Offering a range of chiropody and podiatry treatments designed to optimise your foot health

#### Our valued patients' feedback:

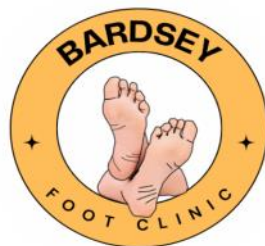
*"Rob was very thorough, explained everything very carefully and gave our feet a good MOT." Would highly recommend."*

*"Rob was efficient, helpful and gave great tips on good foot health. Would recommend too."*

#### Reasons to book:

- HCPC registered Podiatrist
- Friendly, local care, in the comfort of your own home
- Generous appointment slots
- Up to date evidence-based treatments
- Clear and transparent pricing  
(£45 new patients, £35 subsequent appointments)
- Specialist in routine podiatry, high-risk and diabetes care

**Call or email to book!**



**Rob Haythorn BSc MRCPod**  
T: 07565 234044

E: [bardseyfootclinic@outlook.com](mailto:bardseyfootclinic@outlook.com)

Rob is an experienced NHS podiatrist and Bardsey resident. Established in 2023, Bardsey Foot Clinic offers high quality foot care on your doorstep



**Hair by Kathryn**  
MOBILE HAIRDRESSER  
**07767 692052**

**Gillbeck Associates Ltd**  
ACCOUNTING / BOOKKEEPING  
/ TAX & PAYROLL

A professional service at very  
affordable rates - let us save you  
money!

**01937 585432**  
enquiries@gillbeck.co.uk

**Andrew Morgan**  
**Opticians**

**Friendly Professional Opticians**



NHS & Private Eye  
Examinations  
Contact Lenses  
Wide Range of Frames  
for All Budgets  
Essilor Zeiss and  
Acuvue Lens Specialists

Sight Tests for Adults  
and Children

Home Visits Available  
for the Housebound

**01937 849933**

188 High Street, Boston Spa  
www.optician.uk.net



The Complete Funeral Service ~ Est. 1808



**G.E. HARTLEY & SON LTD.**

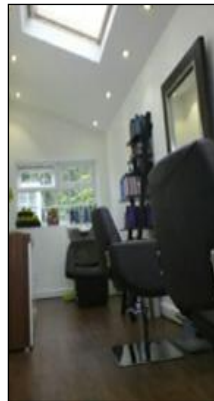
Family Run Business - 24 Hour On-Call Service  
Monumental Masonry - Pre-paid Funeral Plans

[www.gehartley.co.uk](http://www.gehartley.co.uk)

WETHERBY  
66 Westgate  
LS22 6NJ  
01937 588888

GARFORTH  
62a Main Street  
LS25 1AA  
0113 286 2980

**EKOne HAIRDRESSING**  
BESPOKE COLOURING & RESTYLING



**STATE REGISTERED  
MASTER  
CRAFTSMAN**

Professional salon  
environment, with  
off road parking

Call **Elaine** on  
**01937 572550 /**  
**07762 024229**

3 The Grove,  
East Keswick



**Adrian Wood**  
**Boston Spa**  
**Garage**

**SERVICING CARS LOCALLY FOR OVER 30 YEARS**



Moor End, Boston Spa, Wetherby LS23 6ER  
Tel: **01937 844400**



**Wetherby**  
**Body Shop**

**BODY SHOP**  
**REPAIRS**

**All types of Accident**  
**and Repair Work**

Unit 10 Erivan Park, Sandbeck Way, Wetherby LS22 7DN  
Tel: **01937 580700**

## Diary Dates

OCTOBER		NOVEMBER	
5	Charity Jigsaw Bonanza, 9.30am-4.30pm	2	Macmillan Cancer Coffee Morning, 10am
8	Callister Café, 12.45	7	EK History Group Talk, 8pm
8	EK WI, 2pm	12	Callister Café, 12.45pm
9	Bardsey-cum-Rigton WI, 7.30pm	12	EK WI, 2pm
12	EK Village Hall Open Day	13	Bardsey-cum-Rigton WI AGM, 7.30pm
15	EK Parish Council, 7.30pm	15	Churches Together Quiz Night, 7pm
16	Bardsey Parish Council, 7pm	16	Bowling Club Coffee Morning, 10am
17	EK Flower Club, 1.30pm	19	EK Parish Council, 7.30pm
19-20	Arts Festival, 10am	20	Bardsey Parish Council, 7pm
23	Golden Plover, 7.30pm	27	Parish Quiz, 8pm
23	Parish Quiz, 8pm	28	EKMC Souper Thursday, 12 noon
24	Police & Community Meeting, 18.30pm	29	EK Flower Club, Christmas Demo, 1.30pm
25	Cinema Night, 7pm	29	Cinema Night, 7pm
31	EKMC Souper Thursday, 12 noon	30	EKMC Christmas Craft Afternoon, 2pm

The Village News magazine is published bimonthly by the PCC of the Parish of Bardsey with East Keswick. We welcome contributions from our village communities, relating to news, events and topics of interest, for possible inclusion in the magazine, without charge, which would be published at the discretion of the editorial team. Please send entries for inclusion to: [bardseypcc@gmail.com](mailto:bardseypcc@gmail.com)

**Copy deadline for the December - January edition is Monday 18 November.**

If you missed previous editions you can still find them on the parish website.

### **The Parish of Bardsey with East Keswick**

Currently in vacancy

### **All Hallows Church**

Church Lane, Bardsey, LS17 9DH  
Churchwarden: Jacquie Earnshaw  
01937 574877

### **Saint Mary Magdalene Church**

Moor Lane, East Keswick, LS17 9ES  
Churchwarden: Fiona Siekierkowski  
01937 572836

### **Parish Administrator: Catriona Brent**

Parish Office  
Callister Hall, Woodacre Lane  
Bardsey, Leeds, LS17 9DG  
T: 01937 574273  
E: [bardseyparishchurch@gmail.com](mailto:bardseyparishchurch@gmail.com)

**[www.bardseyekparish.com](http://www.bardseyekparish.com)**

Registered charity Number 1134014

This magazine is printed on fully recyclable paper, by an ISO 14001:2015 certified printer using FSC (Forest Stewardship Council®) paper stock.

